

Change Order Request

5 ea. Fuel Gas Compressors

Presented To:

Venezuela
Guarenas Power Plant

By

DERWICK

DERWICK ASSOCIATES CORP.



Proposal No. T-1009-B

June 11, 2010

**This document is privileged and contains confidential information intended for use only by
Guarenas**

1.0 Introduction

Derwick Associates Corp. (“DAC”) has prepared this proposal to furnish and install five (5) Fuel Gas Compressors to the Guarenas Power Plant. The scope of work includes the Engineering and Installation of the following:

- Two (2) Gas Compressors for the GE LM 2500 Plus Gas Turbines
- Two (2) Gas Compressors for the GE LM 6000 PC Gas Turbines
- One (1) Gas Compressor as standby for both sets of compressors

The following sections of this TSD provide more detail on the Fuel Gas Compression scope of this proposal.

Note: The Owner has purchased two (2) dual fueled GE LM 6000 PC Sprint Gas Turbine Generator packages with associated facilities and two (2) dual fueled GE LM 2500+ Gas Turbine Generator packages for this project. The Natural Gas fuel delivery pressure to the site is 250 psig. These Gas Turbines when fueled with natural gas will require Fuel Gas Compressors and associated equipment as identified below:

2.0 Fuel Gas Compressor Sets Scope of Supply

2.1 Fuel Gas Compressors for 2 x LM 2500+ Gas Turbine Generators

Contractor will supply two (2) Fuel Gas Compressor sets each capable of providing 7 mmscfd of fuel gas to each GE LM 2500+ GTG at a minimum of 500 psig. with a minimum suction pressure of 250 psig.

- The Fuel Gas Compressors will be electric motor driven at 4,160 KV, 3 phase
- Skid mounted motor with multi-stage compressor
- One Compressor with water/ lube oil exchanger and One with Fin Fan Cooler
- Control panel. Note: These items will be installed in the contractor supplied modular pre-built fuel gas compressor control with MCC's

2.2 Fuel Gas Compressors for 2 x LM 6000 PC Gas Turbine Generators

Contractor will supply Three (3) Fuel Gas Compressor sets each capable of providing 11 mmscfd of fuel gas to each GE LM 6000 PC Sprint gas turbine generator sets at a minimum of 700 psig with a minimum suction pressure of 250 psig. One compressor will act as standby for the 2ea LM 25000 Plus GTG's and the 2ea LM 6000 GTG's

- These Fuel Gas Compressors will be electric motor driven at 4.16 KV, 3 phase
- Skid mounted motor with multi-stage compressor
- Fin-fan Lube oil cooler
- Control Panel
- 4160 and 480 volt MCC's installed in the Electrical Room of the Compressor Shed

Contractor will provide Turnkey EPC Services to purchase and install these Fuel Gas Compressors and required Balance of Plant described below:

2.3 Scope of Supply and Detailed Division of Responsibility

Material/Responsibility	Qty	Description
Owner:		
	1 Lot	Natural Gas Pipeline and supply metered at inter-tie point within 50' of Plant Boundary at a quality that meets GE's Aero-derivative gas turbine specifications.
	1 Lot	Permits for Environmental, Importation, Building, Operations, etc. to allow plant construction and commercial operations
	1 Lot	Construction & Commissioning Water and 480V three phase power
	1 Lot	Access Roads to site as required
	1 Lot	Import Duties and Taxes
	1 lot	Right of Way, easements, etc. to allow proposed interconnects as required
	1 Lot	Project Site free and clear of rock and ground water with sufficient space to install Fuel Gas Compression facilities
	1 Lot	Natural Gas Supply Delivered to the Plant Boundary by pipeline at a minimum of 250 psig pressure.
	1 Lot	Permits for Environmental, Transportation, Building, Construction, Operations, etc.
	1 Lot	Construction & Commissioning Auxiliary Power, 480V three phase power
Contractor will Provide and Install		
Civil, Engineering & Construction:		
	1 Lot	Design Engineering and Construction Management of Contracted Labor including Safety, QA/QC, Project Schedule Management, Technical management, start-up, commissioning, systems turnover and performance testing.
	1 Lot	Plant Site civil earthwork, leveling, foundations, roadways, plant gravel, asphalt and paving
Contractor Mechanical Supply		
	2	Fuel Gas Compressors for the 2 GE LM 2500 GTG's
	3	Fuel Gas Compressors for the 2 GE LM 6000 GTG's with one compressor as a spare capable of serving as back up to either model of GTG
	1 Lot	Mechanical pipe, valves, and material including installation with contract labor



DERWICK ASSOCIATES CORP.

Venezuela – Fuel Gas Compressors
2 x LM 2500+ & 2 x LM 6000 PC
Guarenas Power Plant
Technical Scope Document

Electrical

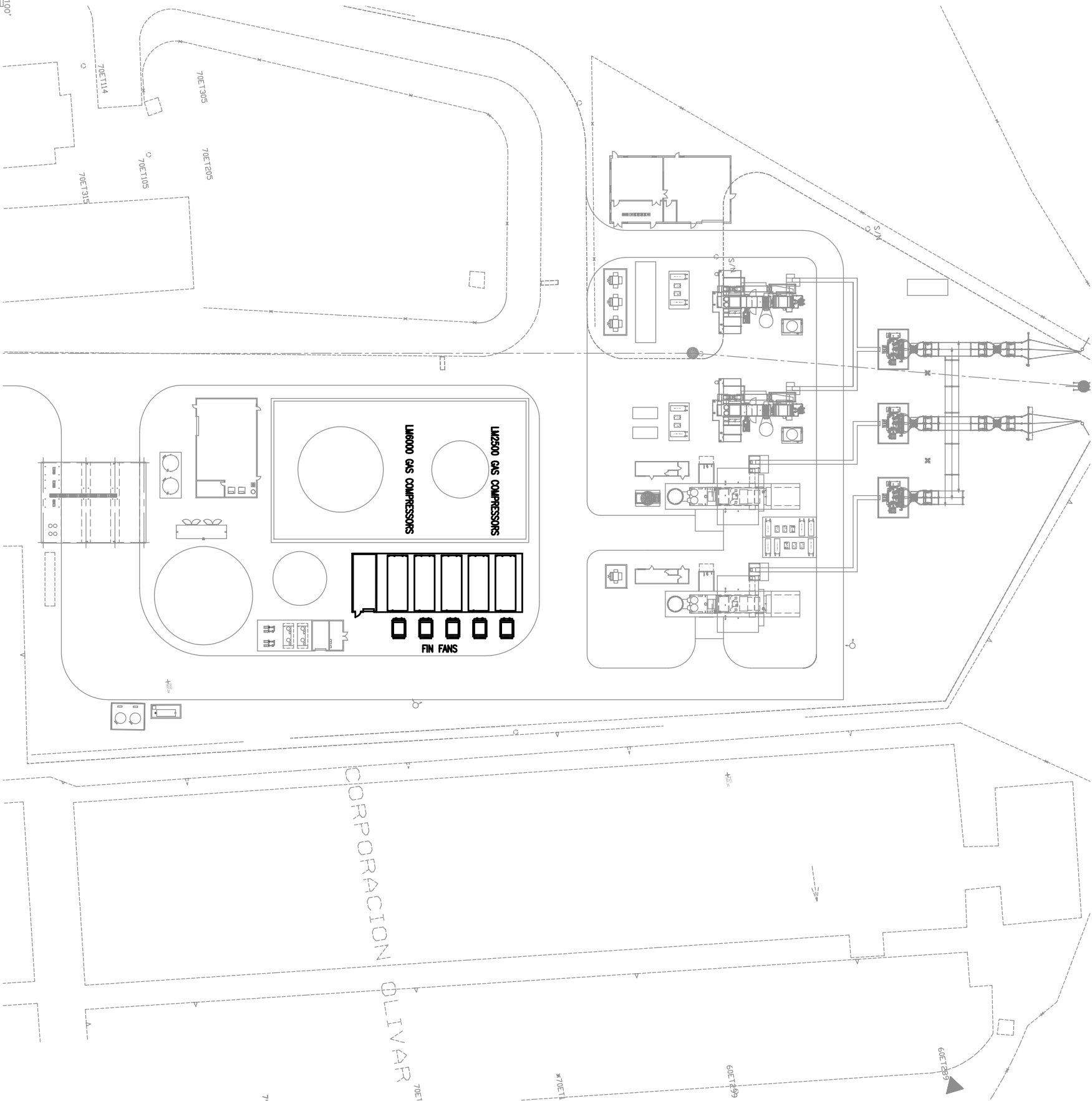
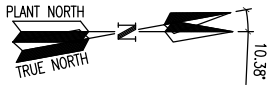
- 2 13.8KV 4.160 KV 3750 KVA Aux Transformer
- 2 4.16 KV 1200 Amp Breakers
- 1 Lot Electrical wire, conduit, and cable including installation with contract labor
- 1 4160 V MCC for Compressors w/ 5ea Starter
- 1 480 V Distribution Panel Feeder Breaker
- 1 BOP 480V MCC
- 1 Lot Cathodic Protection System


**Associated
Instrumentation:**

- 1 Lot Plant Instrumentation
- 1 Lot Interconnect to Plant DCS System


Buildings:

- 1 Fuel Gas Compressor Shed





Electricidad
de Caracas




DERWICK
DERWICK ASSOCIATES CORP.

© COPYRIGHT 2008. Preliminary Services. All Rights Reserved.
THIS DRAWING IS THE PROPERTY OF DERWICK ASSOCIATES CORP. AND IS LOANED TO THE CLIENT FOR THE PROJECT ONLY. IT IS NOT TO BE REPRODUCED OR USED FOR ANY OTHER PROJECT WITHOUT THE WRITTEN PERMISSION OF DERWICK ASSOCIATES CORP. ANY REUSE OR MODIFICATION OF THIS DRAWING WITHOUT THE WRITTEN PERMISSION OF DERWICK ASSOCIATES CORP. IS STRICTLY PROHIBITED. THIS DRAWING IS THE PROPERTY OF DERWICK ASSOCIATES CORP. AND IS LOANED TO THE CLIENT FOR THE PROJECT ONLY. IT IS NOT TO BE REPRODUCED OR USED FOR ANY OTHER PROJECT WITHOUT THE WRITTEN PERMISSION OF DERWICK ASSOCIATES CORP. ANY REUSE OR MODIFICATION OF THIS DRAWING WITHOUT THE WRITTEN PERMISSION OF DERWICK ASSOCIATES CORP. IS STRICTLY PROHIBITED.

NO.	DATE	BY	APP'D	DESCRIPTION
0	6/11/10	LES		ISSUE FOR INFO
				REVISIONS

DRAWN	CHECK	DESIGN	ENGINEER	PROJ MGR	QA MGR	SCALE	SIZE
LES	LES	6/11/10	6/11/10			1"=40'	D

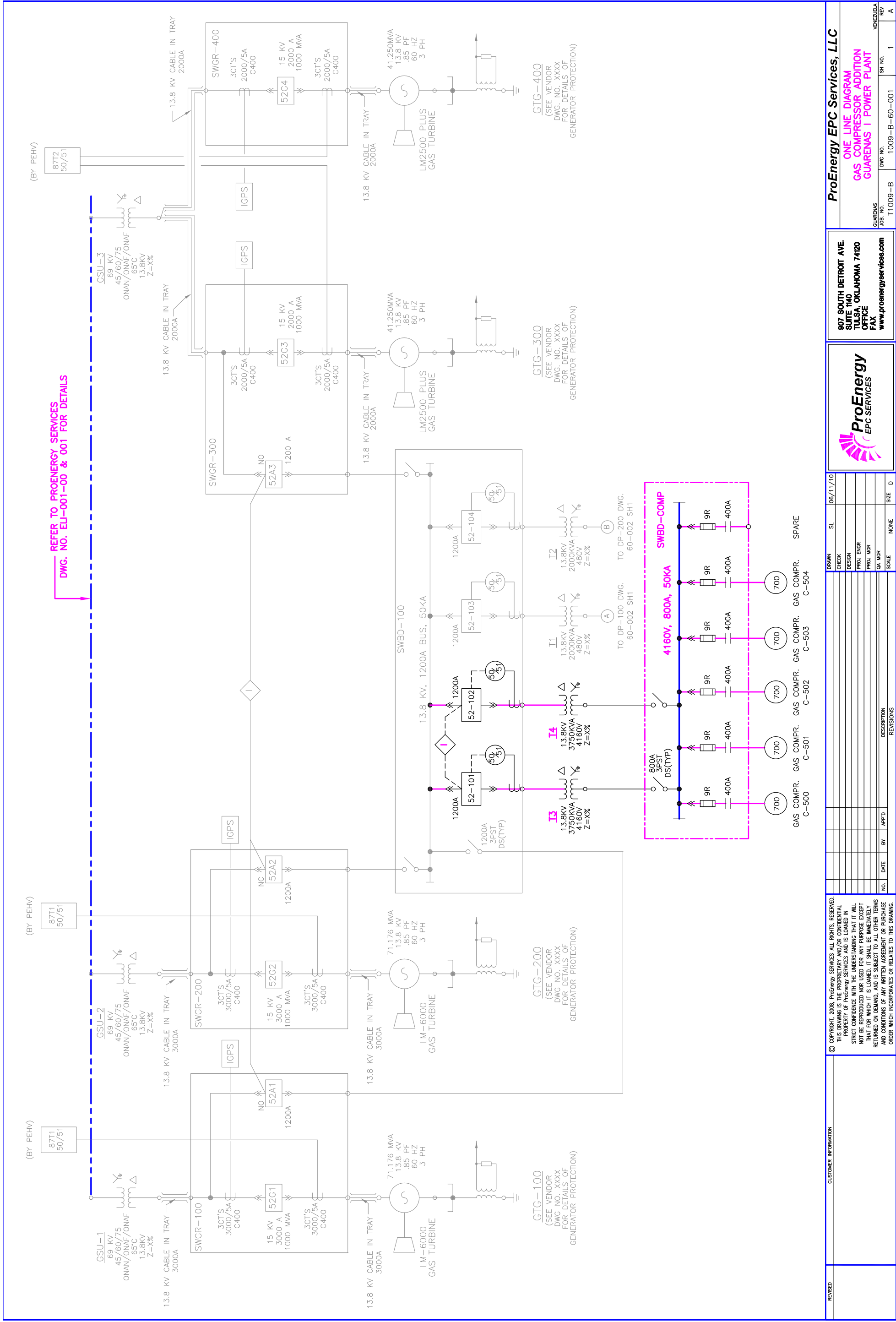



807 S DETROIT
SUITE 1140
TULSA, OKLAHOMA 74120
OFFICE 880-828-5100
FAX 818-270-2839
www.proenergyepcservices.com

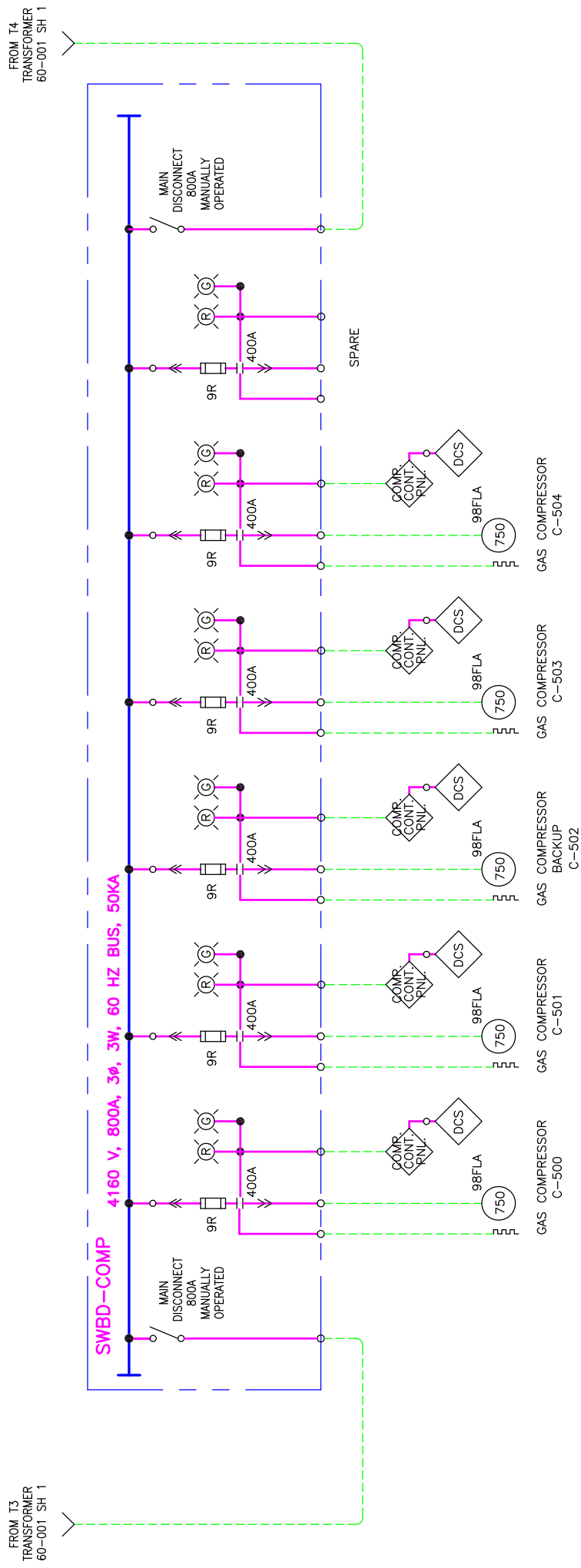
ProEnergy EPC Services, LLC

GENERAL ARRANGEMENT PLAN
GAS COMPRESSORS CHANGE ORDER T-1009B
GUARENAS POWER PLANT

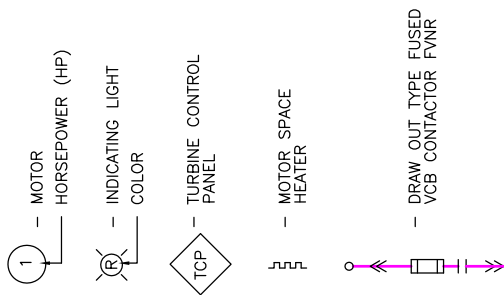
GUARENAS
JOB NO. T-1009
DWG NO. 10-001
SHEET NO. 2
REV 0



REVISED		CUSTOMER INFORMATION									
<p>© COPYRIGHT, 2008, ProEnergy Services, LLC. ALL RIGHTS RESERVED. THIS DRAWING IS THE PROPRIETARY AND/OR CONFIDENTIAL PROPERTY OF ProEnergy Services and is LOANED IN STRICT CONFIDENCE WITH THE UNDERSTANDING THAT IT WILL NOT BE REPRODUCED NOR USED FOR ANY PURPOSE EXCEPT THAT FOR WHICH IT WAS LOANED. IT IS TO BE RETURNED TO THE COMPANY FROM WHICH IT WAS RETURNED ON DEMAND, AND IS SUBJECT TO ALL OTHER TERMS AND CONDITIONS OF ANY WRITTEN AGREEMENT OR PURCHASE ORDER WHICH INCORPORATES OR RELATES TO THIS DRAWING.</p>											
DRAWN	SL	06/11/10									
CHECK											
DESIGN											
PROJ ENGR											
PROJ MGR											
QA MGR											
SCALE	NONE	SIZE	D								
NO.		DATE	BY	APP'D	DESCRIPTION						
					REVISIONS						
<div>  <div> ProEnergy EPC SERVICES </div> </div>											
<div> <div> 907 SOUTH DETROIT AVE. SUITE 140 TULSA, OKLAHOMA 74120 OFFICE FAX www.proenergyservices.com </div> <div> ProEnergy EPC Services, LLC ONE LINE DIAGRAM GAS COMPRESSOR ADDITION GUARENAS I POWER PLANT </div> </div>											
GUARENAS		JOB. NO.	11009-B		DWG. NO.	1009-B-60-001		REV.	1		A
VENEZUELA											

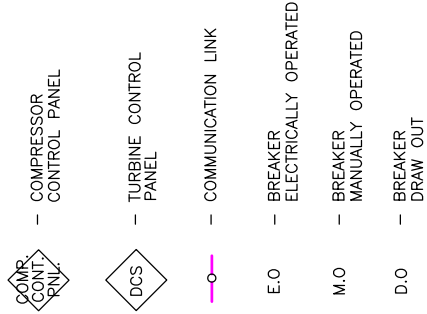


LEGEND:



NOTE:

GAS COMPRESSOR SPACE HEATERS
ARE FED FROM LP-COMP.
SEE DWG 60-047 SH 1 FOR SCHEMATIC
AND 60-010 SH 9 FOR PANEL DRAWING.



<p>© COPYRIGHT, 2008, ProEnergy SERVICES. ALL RIGHTS, RESERVED. THIS DRAWING IS THE PROPRIETARY AND/OR CONFIDENTIAL PROPERTY OF ProEnergy SERVICES AND IS LOANED IN STRICT CONFIDENCE WITH THE UNDERSTANDING THAT IT WILL NOT BE REPRODUCED NOR USED FOR ANY PURPOSE EXCEPT THAT FOR WHICH IT WAS ORIGINALLY PREPARED. RETURNED ON DEMAND, AND IS SUBJECT TO ALL OTHER TERMS AND CONDITIONS OF ANY WRITTEN AGREEMENT OR PURCHASE ORDER WHICH INCORPORATES OR RELATES TO THIS DRAWING.</p>										<p>CUSTOMER INFORMATION</p>									
<p>REVISED</p>										<p>PROEnergy EPC Services, LLC</p>									
<p>ONE LINE DIAGRAM - 4160 V SWBD-COMP GAS COMPRESSOR ADDITION GUARENAS I POWER PLANT</p>										<p>907 SOUTH DETROIT AVE. SUITE 140 TULSA, OKLAHOMA 74120 OFFICE FAX www.proenergyservices.com</p>									
<p>06/11/10</p>										<p>06/11/10</p>									
<p>DRAWN</p>										<p>SL</p>									
<p>CHECK</p>										<p>DESIGN</p>									
<p>PROJ ENGR</p>										<p>PROJ ENGR</p>									
<p>PROJ MGR</p>										<p>PROJ MGR</p>									
<p>CA MGR</p>										<p>CA MGR</p>									
<p>NO.</p>										<p>DATE</p>									
<p>BY</p>										<p>APPTD</p>									
<p>SCALE</p>										<p>NONE</p>									
<p>DESCRIPTION</p>										<p>SIZE D</p>									
<p>REVISIONS</p>										<p>REV</p>									
<p>1</p>										<p>1</p>									
<p>1009-B-60-002</p>										<p>1009-B-60-002</p>									
<p>GUARENAS</p>										<p>GUARENAS</p>									
<p>JOB NO.</p>										<p>DWG NO.</p>									
<p>VENEZUELA</p>										<p>VENEZUELA</p>									

